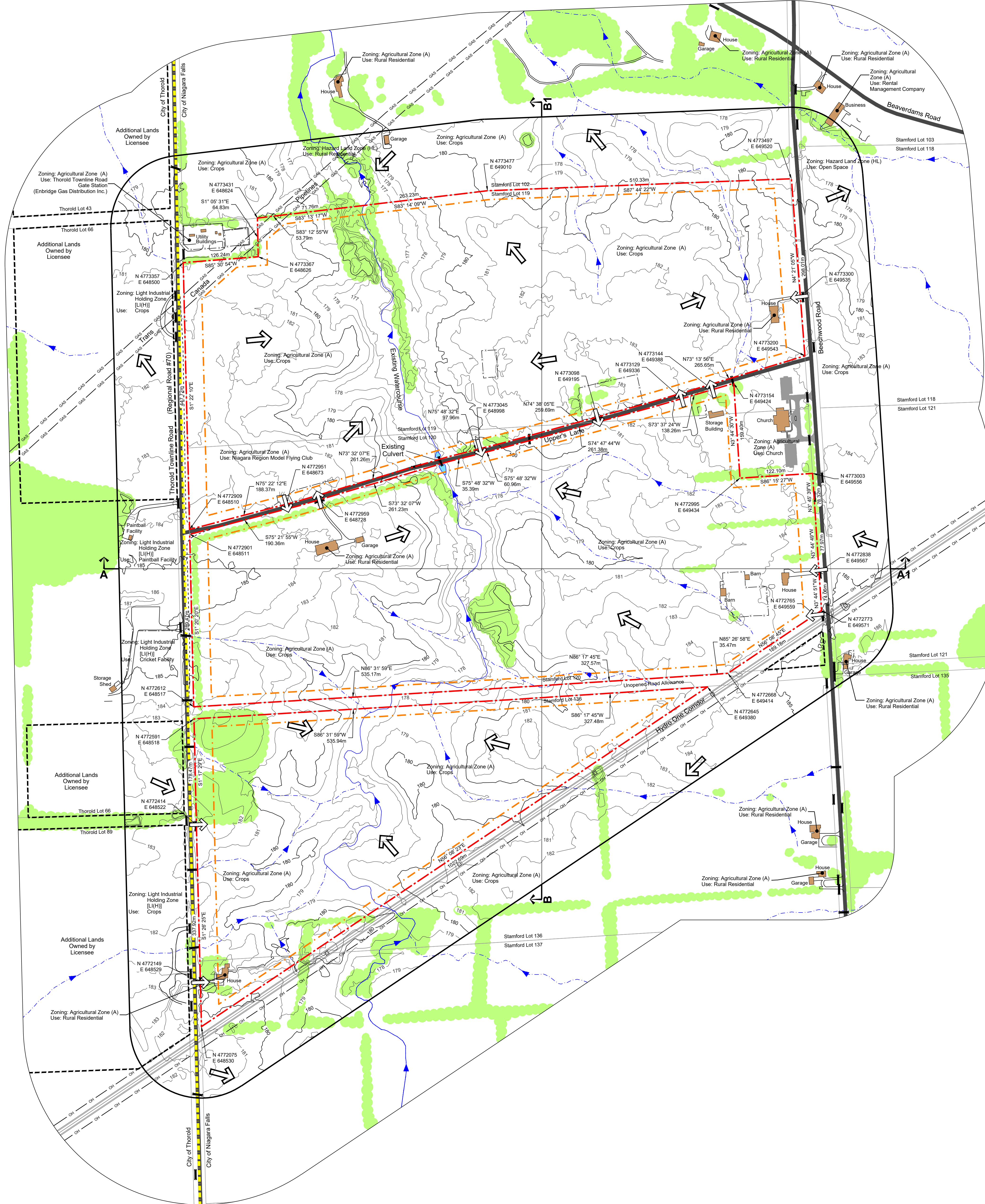


- A. General**
- This Site Plan is prepared under the Aggregate Resources Act for a Class A Licence for a quarry below the ground water table.
  - Areas to be licensed  
103.6 ha. (±256.0 ac.)  
Areas to be extracted  
89.1 ha. (±220.2 ac.)
- B. References**
- Contour information was obtained from a topographic survey prepared by TEC Engineering (formerly Renshaw (Canada) Limited) using October 2016 and February 2017 aerial photography and are displayed in one metre intervals. Elevations shown are in metres above sea level (masl).
  - Topographic information was obtained from numerous sources including Ontario Geohub (Land Information Ontario), Google Earth Pro aerial photography captured on July 18, 2018 and field investigations for technical reports.
  - All topographic features and structures are shown to scale in Universal Transverse Mercator (UTM) with North American Datum 1983 (NAD83), Zone 17 (metre), Central Meridian 81 degrees west coordinate system.
  - Property boundaries were obtained from a Plan of Survey prepared by Matthew, Cameron, Heywood-Kerry T. Howe Surveying Ltd. dated April 5, 2012. Other property boundaries were established using Municipal Property Assessment Corporation (MPAC) parcel fabric data.
  - Zoning categories on or within 120 metres of the licence boundary are from the City of Niagara Falls Zoning By-law No. ZS-200 (Schedules A3 and A4 - Consolidation April 2015).
  - Land use information on or within 120 metres of the licence boundary has been compiled from October 2016 orthophotography, site visits and water well survey data.

- C. Groundwater**
- The maximum predicted water table is 184.9 masl and the contact aquifer potentiometric contours ranges between 176.0 and 184.9 masl (as per WSP's "Proposed Upper's Quarry - Maximum Predicted Water Table Report", dated October 2021).
- D. Drainage**
- Existing surface water drainage on and within 120 metres of the licence boundaries are by overland flow in the direction shown by arrows on the plan view.
- E. Site Access and Fencing**
- There are two (2) existing site accesses on Thorold Townline Road, six (6) existing site accesses on Upper's Lane, and three (3) existing site accesses on Beechwood Road.
  - Post and wire fencing (unless otherwise noted) exists in the locations shown on the plan view.

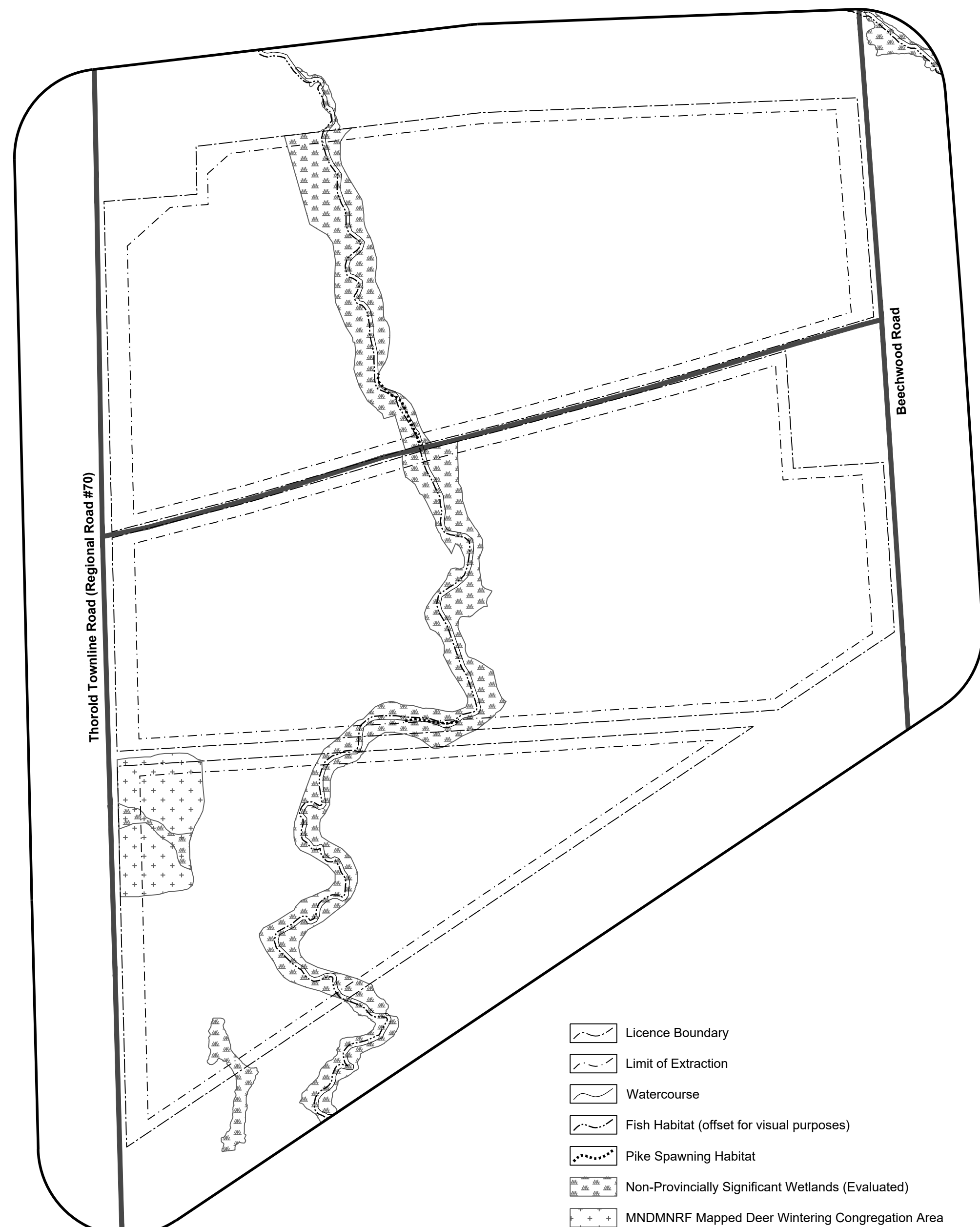
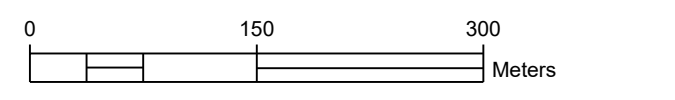
- F. Significant Features**
- All significant natural features on and within 120 metres of the licence boundary are shown on the Key Natural Heritage Features Schematic on this drawing.
  - All significant human-made features on and within 120 metres of the licence boundary are shown on the plan view.

- G. Aggregate Related Site Features**
- There are no existing aggregate operations or features within the licence boundaries such as stationary or portable equipment, stockpiles, recyclable materials, scrap, fuel storage, haul roads, berms or excavation faces.
- G. Technical Reports - References**
- Upper's Quarry: Acoustic Assessment Report, RWDI, October 2021.
  - Agricultural Impact Assessment for Upper's Quarry, Colville Consulting Inc., October 2021.
  - Upper's Quarry: Air Quality Assessment, RWDI Air Inc., October 2021.
  - Archaeological Assessments:
    - Stage 1 Archeological Resource Assessment of Walker Aggregates Proposed South Niagara Quarry, Part of Lots 102, 119, 120, 136 & 137, Archeological Services Inc., December 2008.
    - Stage 1-2 Archeological Assessment of Part 9764 Upper's Lane, Part of Lots 119 & 120, Archeological Assessments Ltd., November 3, 2005.
    - Stage 2-3 Archeological Assessment, Part of Lots 102, 119, 120, 136 & 137, Archeological Assessments Ltd., November 21, 2012.
    - Stage 1-2 Archeological Assessments, Upper's Quarry Additional Lands, Part of Lots 1188, 120, Archeological Research Associates Ltd., April 20, 2020.
    - Stage 3 Mitigation of Development Impacts, Final Excavation Report, Walker XI (AgGT-411), Upper's Quarry, Archeological Research Associates Ltd., May 28, 2021.
    - Stage 4 Mitigation of Development Impacts, Final Excavation Report, Walker XI (AgGT-178), Upper's Quarry, Archeological Research Associates Ltd., July 22, 2021.
  - Blast Impact Analysis, Upper's Quarry, Explotech, October 2021.
  - Cultural Heritage Impact Assessment Report, Proposed Upper's Quarry, MHBC, October 2021.
  - Economic Benefits Analysis, Prism, October 2021.
  - Level 2 Water Study Report, WSP, October 2021.
  - Maximum Predicted Water Table Report, WSP, October 2021.
  - Upper's Quarry, Niagara: Level 1 and Level 2 Natural Environment Technical Report and Environmental Impact Study, Stantec, October 2021.
  - Planning Justification Report and Summary Statement, MHBC, October 2021.
  - Traffic Impact Study, Upper's Quarry, TMIG, October 2021.
  - Visual Impact Assessment, Proposed Upper's Quarry, MHBC, October 2021.



**Key Natural Heritage Features Schematic**

Scale 1:5000



- Licence Boundary
- Limit of Extraction
- Watercourse
- Fish Habitat (offset for visual purposes)
- Pike Spawning Habitat
- Non-Provincially Significant Wetlands (Evaluated)
- MNDMNR Mapped Deer Wintering Congregation Area

**Legal Description**

Part of Lots 119, 120, 136 & 137  
City of Niagara Falls (Geographic Township of Stamford)  
Regional Municipality of Niagara

- Licence Boundary
- Limit of Extraction
- Additional Lands Owned by Licensee
- Municipal Boundary
- Contours with Elevation (Metres above sea level (MASL))
- Public Road
- Fence (1.2m post & wire fence unless otherwise noted)
- Watercourse (Direction of flow indicated by arrows)
- Surface Drainage Feature (Direction of flow indicated by arrows)
- Water Feature
- Wooded Area
- 120m Offset From Licence Boundary
- Parcel Fabric
- Trans Canada Pipeline Easement
- Hydro One Easement
- Existing Site Access
- Direction of Surface Drainage
- Existing Culvert
- Building/Structure
- Cross Sections

**Site Plan Acronyms**

- ARA - Aggregate Resources Act
- MNDMNR - Ministry of Northern Development, Mines, Natural Resources and Forestry
- MHSTCI - Ministry of Heritage, Sport, Tourism and Culture Industries
- MECP - Ministry of the Environment, Conservation and Parks
- MGCS - Ministry of Government and Consumer Services
- DFO - Department of Fisheries and Oceans Canada
- ECA - Environmental Compliance Approval
- BMPP - Best Management Practices Plan
- PTTW - Permit to Take Water
- MASL - Metres above sea level
- ROW - Right of way
- HMA - Hot mix asphalt

**Site Plan Amendments**

No.	Date	Description	By

**Site Plan Revisions (Pre-Licensing)**

No.	Date	Description	By
1	January 2022	Add Key Natural Heritage Features Schematic and Section F to the site plan index	C.P.

**MHBC Stamp**

113 COLLIER STREET, BARRE, ON, LAM 1H2 | P: 705.728.0445 F: 705.728.2010 | WWW.MHBC.PA.COM

**PLANNING URBAN DESIGN & LANDSCAPE ARCHITECTURE**

**MHBC Stamp**

Is authorized by the Ministry of Northern Development, Mines, Natural Resources and Forestry pursuant to Subsection 0.2(3)(f) of Ontario Regulation 244/97 to prepare and certify site plans.

**MHBC Stamp**

Is authorized by the Ministry of Northern Development, Mines, Natural Resources and Forestry pursuant to Subsection 0.2(3)(f) of Ontario Regulation 244/97 to prepare and certify site plans.

**Applicant**

**walker aggregates**

Walker Aggregates Inc.  
2800 Thorold Townline Road  
P.O. Box 100  
Thorold, Ontario  
L2V 3Y8

**Project**

**Upper's Quarry**

**MNDMNR Licence Reference No.**

**Applicant's Signature**

**Plan Scale:** 1:3000 (Arch E)

**Date:** October 2021

**Drawn By:** C.P. **File No.:** 9811V

**Checked By:** D.W.

**File Name:** Existing Features

**Drawing No.:** 1 of 6

**File Path:** N:\9811V - Walker Upper's Quarry\Drawings\Site Plan\CAD\9811V - Site Plan - Proposed Scenario.dwg